

# Weekly Bulletin



Diary Dates	
29 <sup>th</sup> January	Woodlands Meed Teaching Assistant Celebration Day
31 <sup>st</sup> January	INSET Day
2 <sup>nd</sup> February	Number day
6 <sup>th</sup> February	Parents' Evening school and college site
6 <sup>th</sup> February	Year 9 Parents college presentation 4pm and 6pm
12 <sup>th</sup> to 16 <sup>th</sup> February	HALF TERM
W/C 04 <sup>th</sup> March	Reading is my Super Power Week
4 <sup>th</sup> – 9 <sup>th</sup> March	National Careers Week
7 <sup>th</sup> March	World Book Day

4LN PE Swimming Spring 2024
4DS PE Swimming Spring 2024
4CR PE Swimming Spring 2024
4AA PE Swimming Spring 2024
Mixed School & College trip to The Triangle, Burgess Hill – 18.03.24
Owl Class trip to St Pauls – 05.03.24
Mixed KS3 trip to The Triangle, Burgess Hill – 04.03.24
Mixed School & College (Year 9, 10 & 11) trip to The Triangle, Burgess Hill – 05.02.24
Parents Evening 06.02.24
Mixed KS3 Travel Club – Spring Term
Mixed KS3 trip to 1 <sup>st</sup> Central County Ground, Hove – 01.03.24

## Lunch Menu



## Copies of letters



## Term Dates



## School Site Lunches

From Monday 15<sup>th</sup> January we will be returning to having school lunches prepared onsite by the catering team. A copy of the menu is available [here](#).

## Book Donations

The school has recently been very kindly donated many books, these were gratefully received and have been put to good use in our classrooms and library. Due to the volume of books received we are now no longer able to accept any further donations at this time, but we thank you for your support.



Sensory Storytelling

Tuesday 13 February 2024

# AMAZING TALES

A sensory introduction  
to Grimms' Fairy Tales

Join our travelling **sensory storyteller** and wise old Owl as they draw you into an enchanting fairy tale world bringing to life each narrative using **Makaton Signing**, sensory props, chants, rhymes and song.

Advanced show pack included to help prepare children for theatre experience.

BOOK TICKETS ONLINE

[www.h2hsensorytheatre.com](http://www.h2hsensorytheatre.com)

Tickets £3 per child  
(1 adult goes free)



Manor Green  
College,  
Crawley, Sussex

11.45am, 1.15pm &  
2.30pm

Running time - 30mins  
An accessible event  
suitable for ages 2+

Pre-recorded VOCAs  
Makaton friendly



**head & head**  
sensory theatre

Registered charity number: 1161873



Please send in clean and empty plastic tubs for recycling.



Between now and Wednesday 7<sup>th</sup> February, please send in any empty and clean plastic tubs so that the school council can send these to be recycled and to raise money for Macmillan Cancer Support.





We are going to



do

some



Makaton

refreshers



next



term



Anyone

who



came

to



the Parents



training

this term is very



welcome



to come

and



recap.



The training will be as follows:



Jan



26th

Level one ,



Feb



23rd

Level two



March



22nd

Level three



April



26th

level four



Please

can you let



us



know

if



you

will be



coming



Please



email

[vmacrae@woodlandsmeed.co.uk](mailto:vmacrae@woodlandsmeed.co.uk)



Vikki,



Camilla

and



Jenny

**We are delighted to share a series of webinars from specialists in disabled persons trusts and associated wills for parents.**

**Planning for the Future with Wills & Trusts webinar – Wednesday 10 January 2024 – 10.00am – 11.15am**

On Wednesday 10 January, Philip Warford will present a webinar about what to consider when planning for the future of a disabled or vulnerable loved one using Wills and Trusts. Philip will explain how you can safeguard means-tested benefits and how to provide financial security for them, as well as the rest of your family. Philip will talk through the different Trust options available, the importance of a Letter of Wishes and the role of Trustees. For further information and to book a place [click here](#).

**Decision Making for Vulnerable People webinar - The Mental Capacity Act, Lasting Powers of Attorney and Court of Protection – Thursday 18 January 2024 – 10.00am – 11.15am**

On Thursday 18 January, Philip Warford will be delivering a webinar about who can make decisions on behalf of another person, the key principles of the Mental Capacity Act 2005, Powers of Attorney and how the Court of Protection might help. If you are a parent or carer of a child or young person who may not be able to make decisions about their welfare and finances now or in the future, you will need to consider the best ways to protect them as they move to adulthood. For further information and to book a place please [click here](#).

**Welfare Benefits webinar – Wednesday 31 January 2024 – 10.00am – 11.15am**

If you are a parent or carer of a person with disabilities or additional needs, you may be concerned about navigating the complicated benefits system in the right way. In this free 1-hour webinar, Renaissance Legal's specialist benefits team will explore and answer some common benefits questions to provide parents and carers with practical, helpful advice and guidance. For further information and to book a place [click here](#).

**A bit about Renaissance Legal ([www.renaissancelegal.co.uk](http://www.renaissancelegal.co.uk))**

We specialise in working with families and carers of disabled and vulnerable individuals, helping them plan effectively for the future with Wills, Trusts, Powers of Attorney, Court of Protection applications, Inheritance Tax Planning and Benefits advice. Renaissance Legal has an unrivalled reputation for their work in the disabled and vulnerable community. The team prides itself on truly understanding the unique needs of families and disabled individuals – all of whom are dealing with complex, often challenging lives, where it's vital that they understand their options. Our webinars are free to join and there is no ongoing obligation.

Any queries please email [elle@renaissancelegal.co.uk](mailto:elle@renaissancelegal.co.uk)





Please



come

and join



us



to learn



Makaton,

the



signing

program



we

use at



Woodlands Meed.



The course will run over

9



weeks,

and will cover



everyday

language

used at



home

and



at Woodlands Meed.



It will start

on the

26<sup>th</sup>

of



January

from



12:45

till



1:45,

at



school site,

and will



continue every



Friday,



finishing

on the

29<sup>th</sup>

of



March.



This is for both



school

and



college



parents

and



carers,

everyone

is

welcome.



We

would



love



to see



you

there.



Please follow the



link

below



to sign up:

<https://www.surveymonkey.co.uk/r/RGYN8CQ>



Camilla,



Vikki

and



Jenny



# Let's Talk About.....

Ellie, a Coproduction Coordinator at WSPCF, was diagnosed autistic in her late twenties and with ADHD a few years later. She is also a mum of three – including two autistic teenagers.

Because your school is part of the Autism In Schools Project, you are invited to join Ellie as she shares her experiences. This year, we are offering a repeat session on Autism and ADHD in Girls, and a new standalone session where Ellie will talk about masking in more detail.

## Let's Talk About Masking

Tuesday 16th January  
7:00 - 8:30pm



<https://forms.office.com/e/5geYU9Vy4C>

## Let's Talk About Masking

Friday 22nd March  
12:00 - 13:30 am



<https://forms.office.com/e/21Nf9D9N15>

## Let's Talk About Autism/ADHD in Girls

Tuesday 23rd April  
8:00 - 21:30pm



<https://forms.office.com/e/rDV8cMOUT5>

## Let's Talk About Masking

Wednesday 15th May  
8:00 - 9:30pm



<https://forms.office.com/e/PBD2wJkUgY>

Please ensure you use the correct link or QR code for the session you would like to attend!



# Lets Talk About Masking

*Join Ellie as she shares her experiences.  
Ellie was diagnosed autistic in her late twenties  
and with ADHD a few years later. She is also a  
mum of three – including two autistic teenagers.*

There's  
still time  
to sign  
up!

**Tuesday 16th January  
7pm - 8:30pm**

**Sign up Here**



<https://forms.office.com/e/5geYU9Vy4C>





## Exceptional People In Care (EPIC) Awards 2024

The twelfth Exceptional People in Care (EPIC) Award Ceremony is taking place this year. West Sussex Children in Care Council and Care Leavers Advisory Board are hosting the EPIC Award Ceremony to celebrate the achievements of West Sussex Children We Care For, Care Experienced Young People, those children and young people in Kinship care and the adults who care for them.

The event is intended to raise the profile and aspirations of those young people (aged 5 to 25 years old) and to recognise their individual achievements.

### **How to nominate**

If you know a young person who you would like to nominate for an award, please do so [here](#).

Young people can be nominated for:

- Big Hearts
- Big Talents
- Big Strength
- Big Thinkers

There are also nominations for Best Supporting Adult, Best Foster Carer, Best Foster Sibling and Volunteering in the Community.

**Nominations close on 15 May 2024.**



### **Orchestras Inc.**

Following the success of our in-school workshops, programmes, and roadshows, we are delighted to be bringing Orchestras Inc to our Horsham Music Centre for two **free** workshops this term and an opportunity to showcase their work at the music centre presentation day on Saturday 23 March.

This inclusive, creative music group is for children and young people under 25 with special educational needs or disabilities and their parents/carers. It is open to all children and young people with additional needs, including those attending special schools, those at mainstream schools or colleges with additional needs and those who are home schooled. No experience necessary!

The group meets at our Horsham Music Centre based at Millais School in Horsham and is open to young people from anywhere with a parent or carer for support. Further details, including how to register a place, can be found here:

<https://www.westsussexmusic.co.uk/orchestras-inc/>

# OPEN EVENT!



**SATURDAY 3RD FEBRUARY  
2024**

**10:00AM-12:00PM**

**To register your interest, please contact [dv8admissions@londonlc.org.uk](mailto:dv8admissions@londonlc.org.uk)**

**SMALL CLASS SIZES**

**SUPPORTIVE LEARNING ENVIRONMENT**

**CREATIVE SPECIALISTS**



**DV8 Sussex, Victoria  
House, 125 Queens Road,  
Brighton, BN1 3WB**

*dv8 Sussex*



**Bexhill Hive, 41 St  
Leonards Rd, Bexhill-on-  
Sea TN40 1HS**

**BEXHILL'S CREATIVE HUB**



**bexhill  
hive**



# Community Food Hubs

West Sussex County Council is working in partnership with Biffa and UKHarvest, a food rescue charity, to reduce food waste and provide access to affordable food using rescued produce.

## How it works?

The Community Food Hubs are open to everyone and are designed to reduce food waste. Simply bring a shopping bag and fill it from a selection of mixed groceries for a suggested donation of £3.50.

Our friendly volunteers will be on hand to help you make the most of your weekly shop by sharing recipes, healthy options, and tips to reduce your household food waste.



## Dates and Location

### Ashenground Community Centre

Southdown Close, Haywards Heath,  
RH16 4JR

10 – 11 am

### Dates:

#### 2023

Friday 19th May

Friday 16th June

Friday 14th July

Friday 11th August

Friday 8th September

Friday 6th October

Friday 3rd November

Friday 1st December

#### 2024

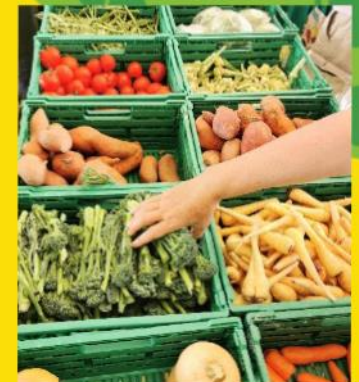
Friday 12th January

Friday 9th February

Friday 8th March

Friday 5th April

\*Confirmed to run until April 2024



@wsrecycles

@ukharvest

For more information please visit:

[westsussex.gov.uk/ukharvest](https://westsussex.gov.uk/ukharvest) or [ukharvest.org.uk/community](https://ukharvest.org.uk/community)



Nourishing Our Nation

**Biffa**

West Sussex  
recycles



Nourishing Our Nation

**Biffa**

West Sussex  
recycles