

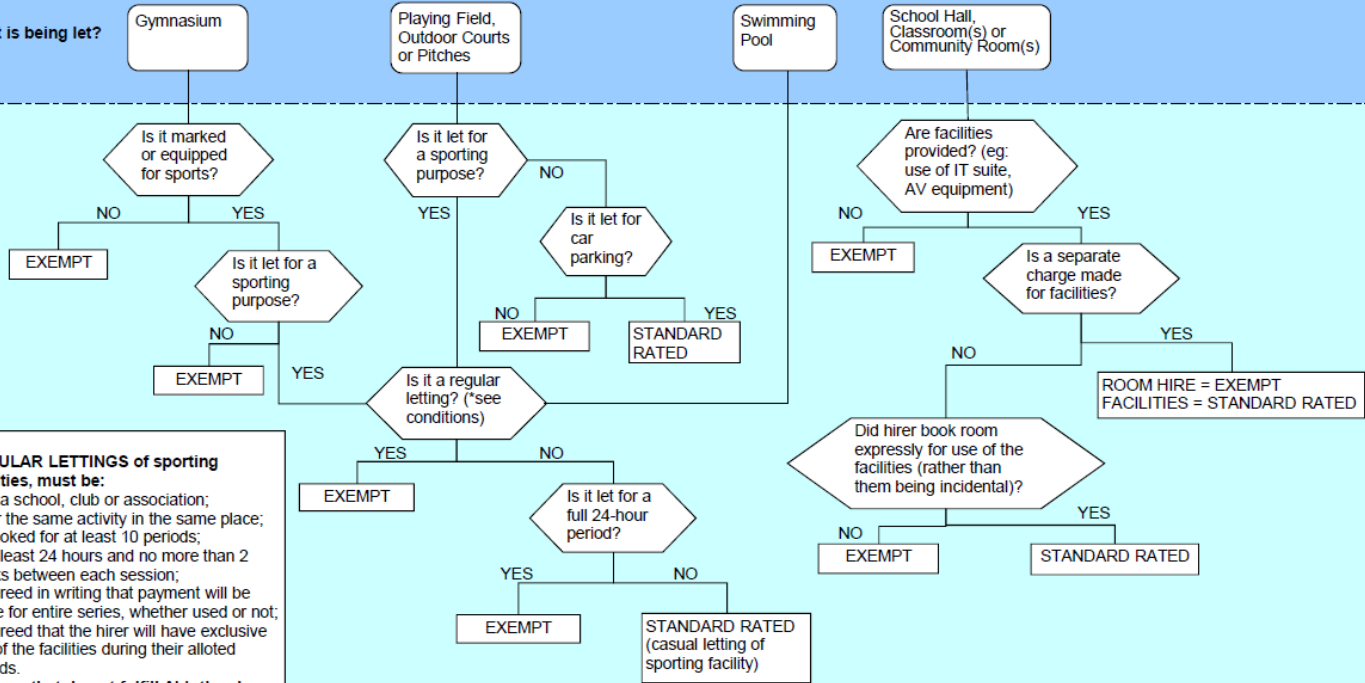
Hourly Rates from September 2023

School Site (RH15 9EY)

Hall	£21.53
Performing Arts Room	£6.54
Physiotherapy Room	£10.30
Swimming Pool	£43.26
College site – Existing Building until December 2023 tbc (RH15 ODP)	
Hall (106m ²)	£14.42
College site – New Build from January 2024 tbc (RH15 ODP)	
Sports Hall (300m ²)	£40.00
Swimming Pool	£43.26
All Weather Pitch (type 4)	£25.00

Vat rates may apply, please see chart below

What is being let?



* **REGULAR LETTINGS of sporting facilities, must be:**

- to a school, club or association;
- for the same activity in the same place;
- booked for at least 10 periods;
- at least 24 hours and no more than 2 weeks between each session;
- agreed in writing that payment will be made for entire series, whether used or not;
- agreed that the hirer will have exclusive use of the facilities during their allotted periods.

Lettings that do not fulfill ALL the above conditions are casual lettings.

NOTES

- Charges to other WSCC establishments/departments are outside the scope of VAT.
- Additional charges for insurance and Insurance Premium Tax are EXEMPT from VAT.
- Voluntary Aided Schools only need account for VAT on S/R lettings if the Governing Body is registered/registerable for VAT.